

# QUICK START GUIDE



**\*For detail operation procedure, please download the manual from software CD!**  
**\*While power is low, completely turn off the logger and replace with new battery.**

## INSTALL THE SOFTWARE

Insert the datalogger software CD then the installation program should start automatically.

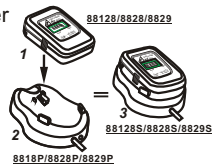
- A. Install Software : Run the installation program
- B. Website : Visit our website
- C. Browse CD-ROM : Browse the CD-ROM through Windows.
- D. Manual : Detail operation procedure in PDF format
- E. USB Driver : Driver for USB type interface
- F. Exit : Exit the installation

## ATTACH THE INTERFACE & LOGGER

Fit the cable (RS232 port or USB port) to your computer by connecting it to the serial port COM1 or COM2 of your PC or Notebook. To use USB port interface, be sure to install USB driver first.

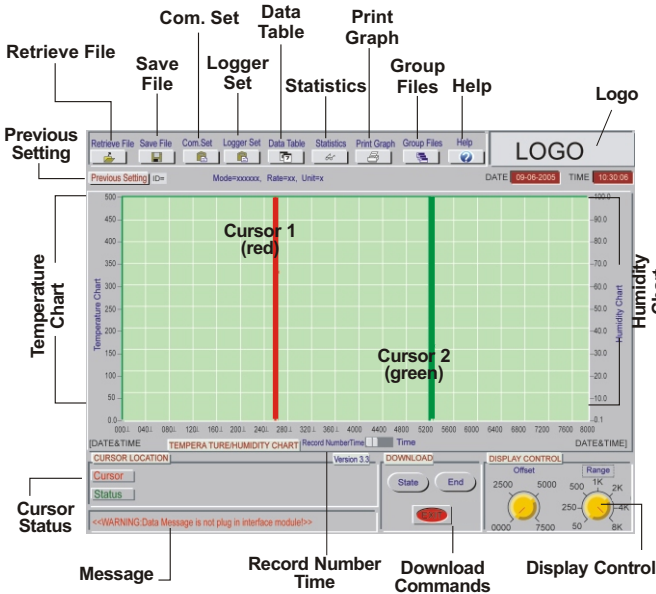


Fit the loggers (88128/8828/29/8813/14/15/8833/34/35/88335/345/355) to your interface by sliding the datalogger onto interface and make the metal points of the interface & datalogger contacted well. While the datalogger contacts well with interface, the ID information of the datalogger will appear on main screen.



If not, **<< WARNING: Data Logger is not plug in interface module!>>** message will appear on screen.

1

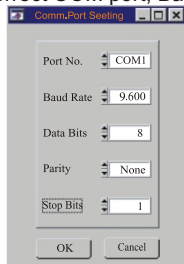


## COM. PORT SETUP

Select icon for "Com. Port Setting". Set correct COM port, Baud rate, Data bits, Parity and Stop bits. Usually, it's COM1 for most PC. Select up to COM 8 for special systems. Select OK to accept setting changes, Cancel to abort and to exit com. port setting.

**Note:**

Always remember to select 9600 baud rate.



2

## LOGGER SETTING

Select "Logger Set" button from main screen to set logger sampling parameters.

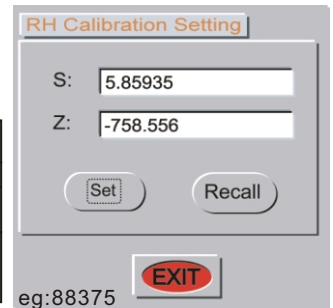
To make sure the time of datalogger is correct, always remember to press "OK " at Clock Setting to make the time frame of logger is same as your local time. **NOTE: The time of your PC must be correct.**

The needed parameters are sample points, sample rate, start mode, unit and ID. If "Schedule" is selected as start mode, then start date and time need to be set as well. High/Low alarm setting are optional.

To select "Sleep" mode could make the logger LCD automatically turn off after sampling is finished. The selectable time frame is from 1 sec. to 12 hours.

For few models, the external probe calibration data need to be keyed into logger through computer before start recording. The calibration data will be printed in a small note enclosed with goods. Please keep the note well. Please enter the values printed on the note into PC ( see right photo) and then press "SET" to save the values.

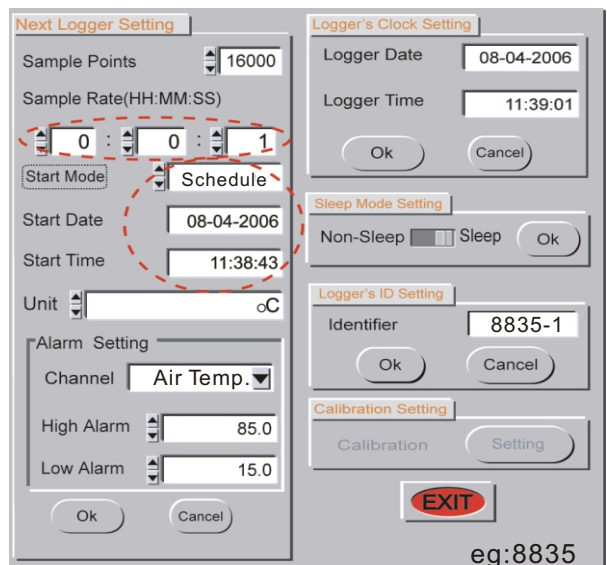
Model	Calibration ?
88335/88345/88355	Need external temp probe calibration
88375	Need external RH probe calibration



Please refer to below table for the available start mode of each type dataloggers.

3

	Immediate	Magnetic	Schedule	On-line	Key Start	Repeat
88128/8828/8829	●	●	●			
8813/8814/8815	●		●		●	
8833/8834/8835	●		●	●	●	●
88335/88345/88355	●		●	●	●	●



eg:8835

## RETRIEVE FILE

Click on icon to retrieve and to load a data file into this program. This program is designed to log up to 4K, 8K or 16K Sample readings.

4

